

Certification & Testing Center Of
GuangDong XinBao Electrical Appliances Holdings Co.,LTD

Standard: Customer Standard

App. No.: P1702012

Sample: Handy Heater

Spec.: TF0202-GS 370W

Applicant: Hu Dezhi

App. Dept.: Head office of Sixth manufacture group

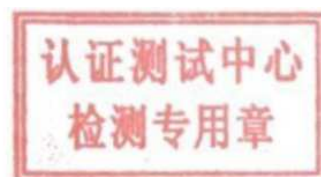
Sample date: 2017-02-11

Test date: 2017-02-14

Result: Use for reference

Test by: Hu Dezhi Check by: Wu Cuifang Approved by: He yanping

Date: 2017-02-14 Date: 2017-01-15 Date: 2017-01-15



stamp:

Instruction

1. It's invalid of the report if without our chop.
2. Duplication is invalid
3. It's invalid of the report if without the signature of tester, checker and approval.
4. Do not cash if altered and missed.
5. The result is just only for the test sample.
6. The result "PASS" means the test item meets the requirement; "FAIL" means the test item are not meets the the requirement; "NA" means the test item are not apply for the requirement. "REF" means the test item just for reference without judgment.
7. Other description:NO

Test Institution: Guangdong Xinbao Electrical Appliance Holdings Co. Ltd

Lab address: Longzhou Road, Leliu, Shunde

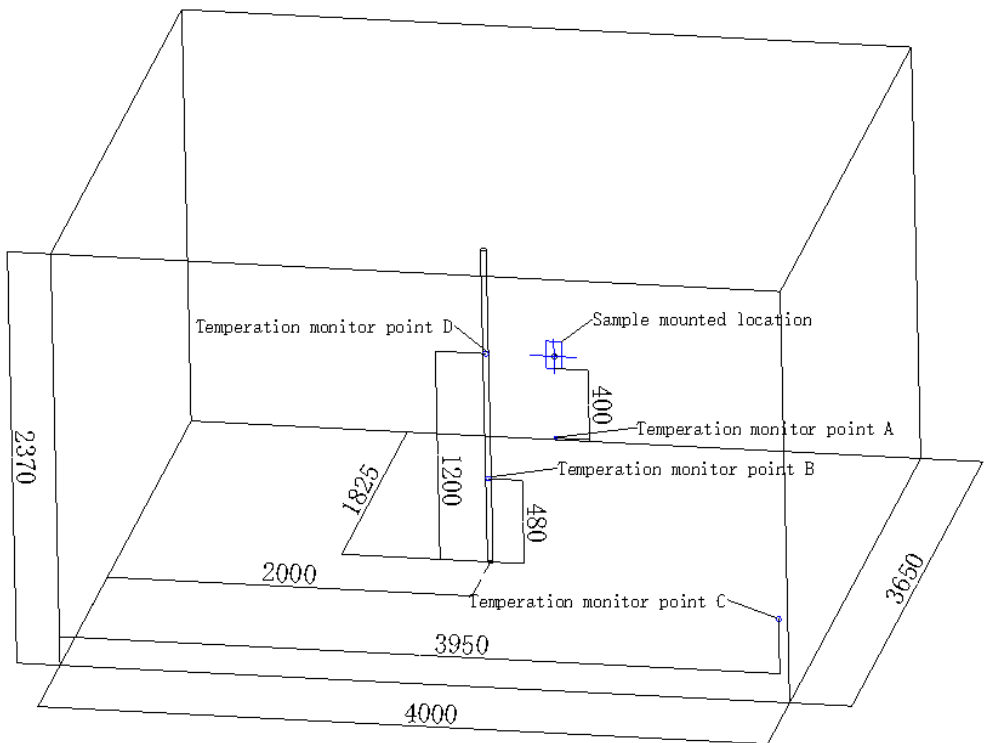
TEL: 0757-25336212/25336267

FAX: 0757-25331046



CODE: 528322

TEL: 0757-25331994

No.	Item
1	HEATING PERFORMANCE

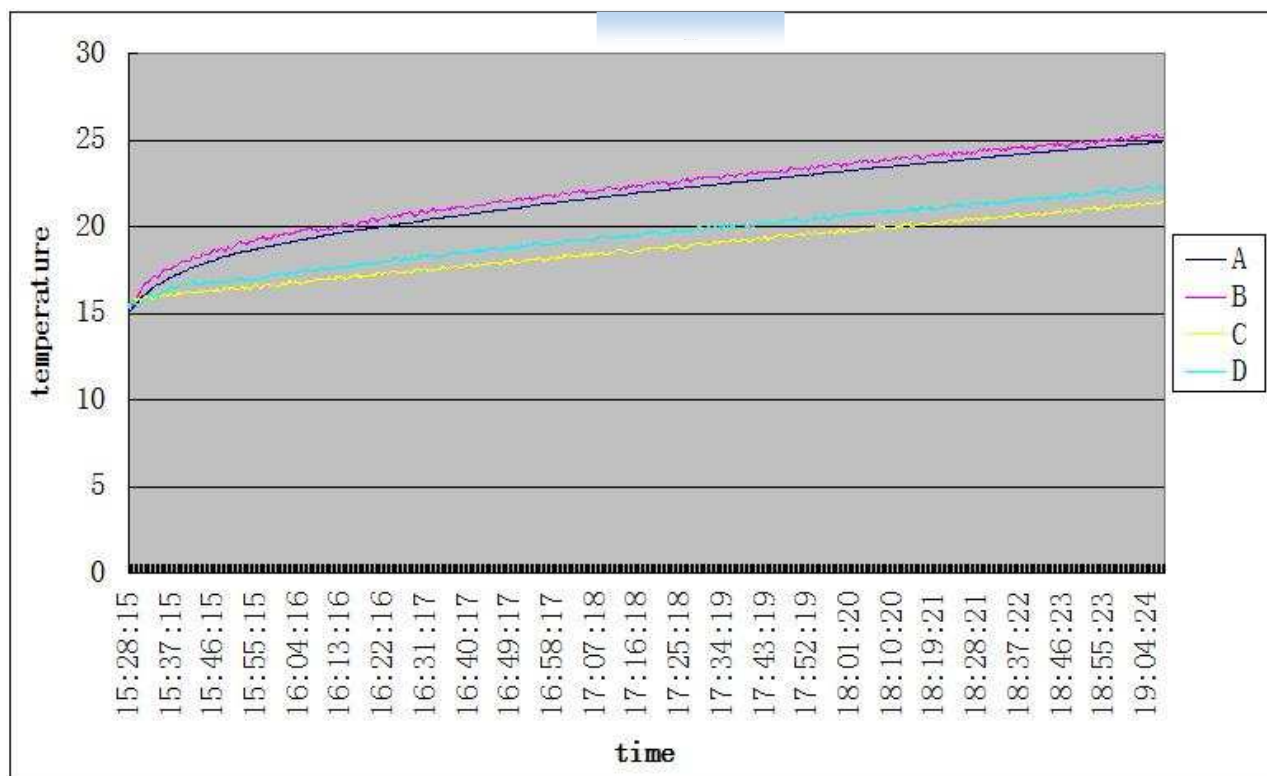
1	HEATING PERFORMANCE <Reference to:Customer requirement>-- Reference, not standard -
1.1	<p>Test conditions:</p> <p>The heater placed in the closed temperature chamber (L=4000mm W=3650mm H=2370mm), it's area is s=14.6(sq.M), Seal the room,hold the temperature chamber at 15℃ &60%RH condition, and then turn off the power of temperature chamber, immediately, running the handy heater at it's rated voltage and high speed mode, so the temperature of the chamber will be rise, record the heating time (t) that the handy heater heating the temperature chamber from 15℃ to 25℃, meanwhile record the sample power when it start testing and end testing.</p> <p>Unit mount /Plug point height from the floor is 400mm , please refer to below figure 1 for details.</p>  <p>Figure 1: Temperature chamber size, sample mounted location & temperature monitor point indicated.</p> <p>According to below formula to calculation the heating time(T) when the temperature chamber area (S) as14.6sq.m, 20sq.m, 25sq.m, 30sq.m, 35sq.m ,40sqm, 45sq.m</p> <p>Formula: $s/t=S/T$</p>

1.2	Test result <Reference not standard >
1.2.1	At temperature chamber (s=14.6sq.m) test data
Samples Type	2# TF0202-GS 230V 50Hz 370W
Sample picture	
HH speed	
Airflow	1.6m/s
Air heat	112℃
Start test power data	358.5W
Start test power picture	
Start test room temperature <point A>	
End test power data	363.9W

End test power picture	
End test room temperature	
Start time	15:28
End time	19:13
Heating time 15°C-25°C	3h45min


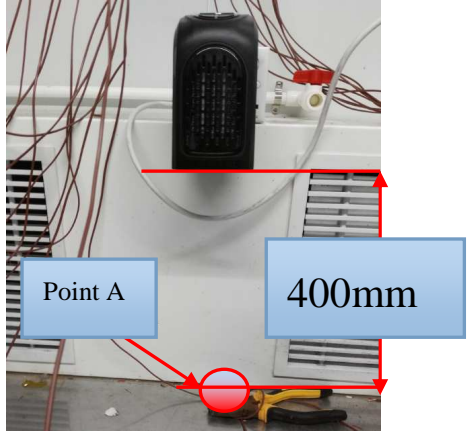
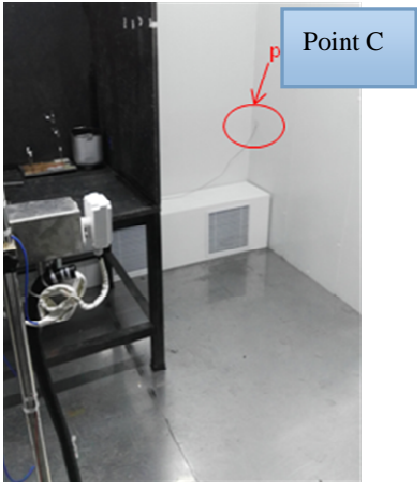
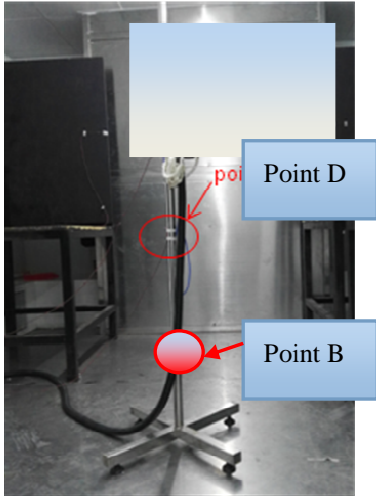
1.2.2

Temperature monitor curve<point A ,B, C, D>



1.2.3	Reference, not standard --According to Formula: $s/t=S/T$, calculation the heating time(T) when the temperature chamber area (S) as 14.6sq.m, 20sq.m, 25sq.m, 30sq.m, 35sq.m 40sqm, 45sq.m
Samples Type	TF0202-GS 230V 50Hz 370W
Room area 14.6(sq.m)	3h45min
Room area 20(sq.m)	5h8min
Room area 25(sq.m)	6h25min
Room area 30(sq.m)	7h42min
Room area 35(sq.m)	8h59min
Room area 40(sq.m)	10h16min
Room area 45(sq.m)	11h33min

1.3	When point A that arrives at the specified temperature, record the time and point B, C, D temperature, test result is as follows <reference>			
Time <ponit A>	Tempertaion ponit A	Tempertaion ponit B	Tempertaion ponit C	Tempertaion ponit D
15:28:15	15.05℃	15.41℃	15.52℃	15.37℃
15:31:15	16.03℃	16.57℃	15.8℃	15.84℃
15:36:15	16.98℃	17.53℃	16.05℃	16.2℃
15:45:15	18℃	18.43℃	16.34℃	16.8℃
16:00:16	19.02℃	19.52℃	16.62℃	17.33℃
16:21:46	20℃	20.47℃	17.24℃	17.95℃
16:47:17	21℃	21.55℃	17.84℃	18.64℃
17:17:18	22℃	22.28℃	18.72℃	19.6℃
17:52:19	23.01℃	23.29℃	19.69℃	20.44℃
18:29:52	24℃	24.46℃	20.45℃	21.3℃
19:13:48	25.04℃	25.4℃	21.62℃	22.41℃

1.4	Test Photo	
		
TF0202-GS	230V 50Hz 370W	Test setup-Sample mounted location
		
Test setup-Temperature monitor point indicate		

Test equipment		
NO	Name	Serial No.
1	Performance test room of refrigeration products	CS2016011401
2	temperature meter	MY44089789
3	Stop watch	S24
4	Power meter	C3RG09044E

End of the report